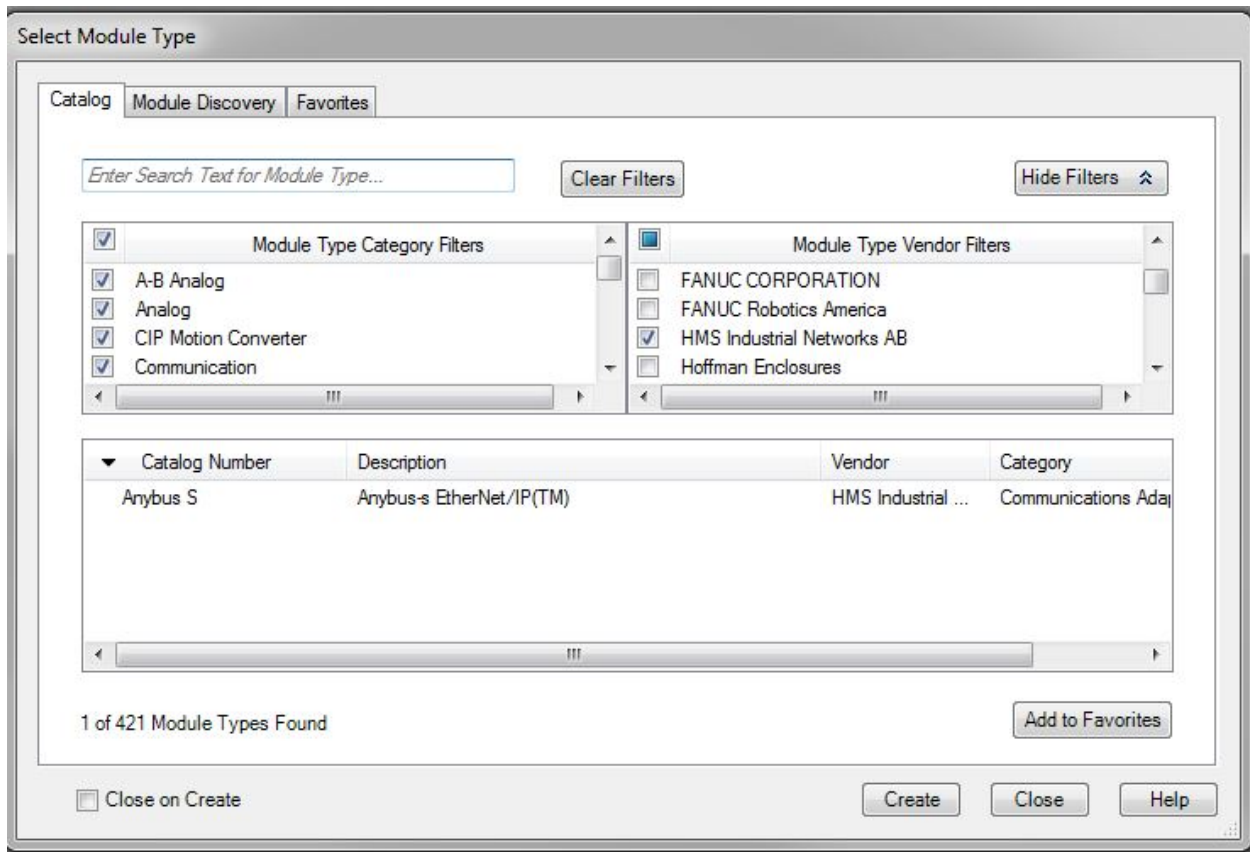


To locate the EDS file, use the following Vendor filter.



Then you will need to change the data type to be setup for integer values. Click on the down arrow to select INT.

New Module

General*

Connection

Module Info

Internet Protocol

Port Configuration

Type: Anybus S Anybus-s EtherNet/IP(TM)

Vendor: HMS Industrial Networks AB

Parent: Local

Name: Scale_Indicator

Description:

Module Definition

Revision: 2.019

Electronic Keying: Compatible Module

Connections: Exclusive Owner

Change ...

Module Definition*

Revision: 2 019

Electronic Keying: Compatible Module

Connections:

Name		Size	
Exclusive Owner	Input:	4	INT
	Output:	4	

OK

Cancel

Help

Status: Creating

OK

Cancel

Help